



Season of Change
NAVIGATING THE
NEW NORMAL



OUCP/CHECE
Annual Report
FY2021–22

CONTENTS

Welcome—OUCP/CHECE Team	4
OUCP/CHECE Graduate Students/Special Acknowledgment	5
OUCP/CHECE—Who We Are	6
PARTNERSHIPS—INTER/INTRA-CAMPUS COLLABORATIONS	7
Center for Health Equity and Community Engagement Funded Research	8
New Jersey HEROES TOO	9
Joseph C. Cornwall Center for Metropolitan Studies	11
Promise Parent Leadership Academy	
NewARK Freedom School	
Rutgers Global Health Institute	12
PWI/Rutgers Global Health Institute	
Equitable Recovery for New Jersey's Small Businesses	
Global Health Connection	
NJ Health Equity Response to COVID-19	14
PARTNERSHIPS—COMMUNITY COLLABORATIONS	15
Advocates for Healthy Living Initiative	16
Senior Connect Digital Divide	
AHLI for Life Colorectal and Lung Cancer Screening Campaign	
Fitness Fridays	17
Anchor Work in Newark West Ward	18
I Have a Dream Foundation	
Trunk or Treat	
Winter Blessing Drive	19
West Ward Community Coalition	
Newark West Ward Clergy Alliance	
New Jersey Black Legislative Caucus Foundation	20
Internship Program	
Virtual Series	
Caresparc Community Food Distribution	21
OUCP/CHECE Youth Focused Programs	22
Jumpstart	
RU Ready for Work	
CO-SPONSORED EVENTS	23
SCHOLARSHIP & ACHIEVEMENTS	25
Refereed Journal Articles	26
Read All About It	
Speaking and Presentations	
Professional Development, Public Service, and Civic Engagement	28
OUCP/CHECE Partners 2021-22	29

WELCOME

Faced with unprecedented challenges realized at the height of the COVID-19 pandemic, the Office of University-Community Partnerships (OUCP) team adroitly cultivated programs and facilitated partnerships that responded to emerging needs. Bolstered by a legacy of successfully building sustainable university and community partnerships predicated upon engendering trust and credibility between the respective entities, the 2021–2022 academic year was dedicated to preserving, enhancing, and expanding these programs and to addressing persistent challenges as we moved toward navigating a “new normal”. Significantly, the pandemic heightened awareness around many pre-existing community needs and generated new and often more severe ones. As the academic year commenced with people working and learning remotely, group gatherings discouraged, and face to face interactions conditioned upon testing and vaccination protocols, virtual and digital platforms became a critical form of connection and communications. Although acquiring the necessary equipment and software, and training students and staff was readily accomplished, connecting to local communities, where the digital divide was most pronounced, presented a very real challenge.

Our team’s multifaceted response included mobilizing the combined resources of the newly formed Center for Health Equity and Community Engagement (CHECE) in partnership with the School of Public Affairs and Administration; connecting faculty/staff from the various Rutgers University campuses with community entities to form meaningful collaborations; conducting strategic community engagement training for faculty, staff and community partners; convening focus groups and/or educational workshops at churches and community based organizations; dispatching students to tutor school students; hosting both onsite and campus programming for hundreds of public school students, residents, stakeholders, and senior citizens; and continuing our support for the university’s strategic engagement priorities. This report provides a snapshot of the OUCP/CHECE team’s responses to “Navigating the New Normal” in this unparalleled season of change.

Diane Hill, Ph.D.

**Assistant Chancellor, University-Community Partnerships;
Director, Center for Health Equity & Community Engagement; Rutgers University–Newark**

OUCP/CHECE TEAM



DIANE HILL, PhD
Assistant Chancellor
dianeh@newark.rutgers.edu



**YVETTE
ORTIZ-BEAUMONT, MPA**
Associate Director
yortiz@newark.rutgers.edu



DONITA DEVANCE, MCRP
Associate Director
devance@newark.rutgers.edu



ROXANNE HALL, MSW
*RU Ready
Program Coordinator*
roxhall@newark.rutgers.edu

OUCP/CHECE GRADUATE STUDENTS



KAREEM WILLIS

Doctoral Candidate
School of Public Affairs
and Administration

CHECE ASSIGNMENTS
Outreach Coordinator
Partnership West Initiative

TYESHIA DAWSON

Graduate, May 2021
Rutgers Business School

CHECE ASSIGNMENTS
Program Coordinator
NJ Black Legislative Caucus
Foundation Internships
Student Trainer
Senior Connect Digital
Divide Initiative

ASSITAN DRAME

MPA Student
School of Public Affairs
and Administration

CHECE ASSIGNMENTS
Project Manager, AHLI for
Life Colorectal & Lung
Screening Campaign
Student Trainer
Senior Connect Digital
Divide Initiative

EPIPHANY MUNZ

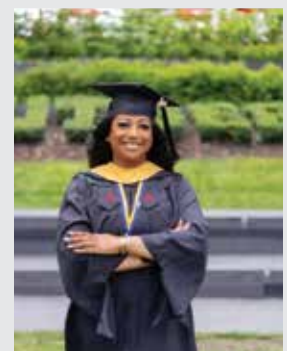
MPA Student
School of Public Affairs
and Administration

CHECE ASSIGNMENTS
Project Staff/Coach
NJ HEROES TOO
Coordinator, Advocates for
Healthy Living Initiative
Project Coordinator
Senior Connect Digital
Divide Initiative

A Special Word of Celebration

Roxanne Hall, MSW, came to OUCP in 2009 as a tenth-grade student at Newark’s West Side High School, part of the first RU Ready for Work (RUR) program cohort. While continuing her studies at Rutgers University–Newark, she continued working with RUR as an intern, teaching assistant, and program ambassador. Upon earning her BA she was appointed to a full-time program coordinator position, where she honed her skills in program management and student support services. Ultimately, Roxanne assumed the position of project co-manager, where she successfully led the program’s day-to-day operations through to its conclusion, while earning a Master of Social Work at Rutgers School of Social Work, Magna Cum Laude!

Congratulations to Roxanne on her stellar achievement and for many years of unwavering dedication to the success of the RU Ready for Work program. We salute you and wish all the best in your future endeavors.



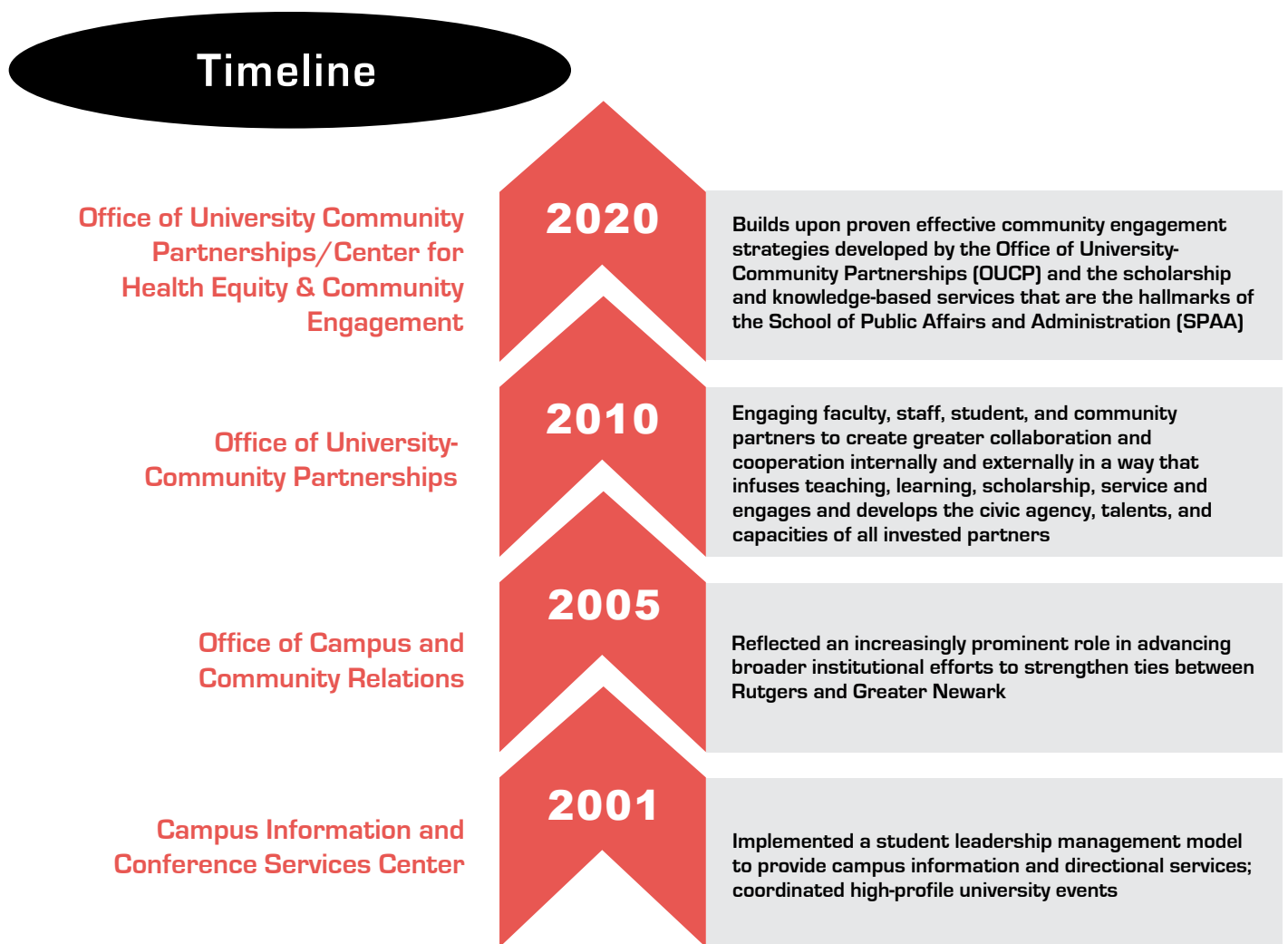
OUCP/CHECE—WHO WE ARE

The Office of University-Community Partnerships (OUCP) at Rutgers-Newark has a dynamic history grounded in principles of education, service, and community building by engaging faculty, staff, students, and community partners to create greater collaboration and cooperation internally and externally in a way that infuses teaching, learning, scholarship, service and engages and develops the civic agency, talents, and capacities of all invested partners.

The mission of the Office of University-Community Partnerships is: To serve as a nexus that connects Rutgers University–Newark students, faculty and staff to expand, create and promote reciprocal and mutually beneficial partnerships that support and align with the university’s strategic engagement priorities. Our guiding principles are: to invest in collaborative academic and research initiatives with particular focus on community-

engaged research, invest in our students, invest in anchor institution collaborations especially those that generate sustainable partnerships, leverage our diversity, transdisciplinary resources and expertise, and generate meaningful dialogue that addresses issues, policies and challenges that impact people’s lives, communities and society.

The Center for Health Equity and Community Engagement (CHECE) builds upon proven effective community engagement strategies developed by the Office of University-Community Partnerships (OUCP) and the scholarship and knowledge-based services that are the hallmarks of the School of Public Affairs and Administration (SPAA). The center’s mission is to support public, nonprofit, and private sector entities to effectively engage underrepresented urban constituencies in health research, scholarship, policy and decision-making, service delivery, community engagement, and assessment.



PARTNERSHIPS

INTER/INTRA-CAMPUS COLLABORATIONS



CENTER FOR HEALTH EQUITY AND COMMUNITY ENGAGEMENT

The Office of University–Community Partnerships & School of Public Affairs and Administration advance new model for engaging communities

Directed by Diane Hill, PhD, Assistant Chancellor, University-Community Partnerships and Assistant Professor of Professional Practice, SPAA and co-directed by Charles E. Menifield, PhD, SPAA Professor and Dean Emeritus, the Center for Health Equity and Community Engagement was established in 2020. It builds upon proven effective community engagement strategies developed by the Office of University-Community Partnerships (OUCP) and the scholarship and knowledge-based services that are the hallmarks of the School of Public Affairs and Administration (SPAA). The center’s mission is to support public, nonprofit, and private sector entities to effectively engage underrepresented urban constituencies in health research, scholarship, policy and decision-making, service delivery, community engagement, and assessment. It accomplishes this by 1) facilitating the integration of transdisciplinary research as a strategy for addressing health equity via sustainable community partnerships that advance the anchor mission

of Rutgers University–Newark, 2) advancing RU-N’s anchor mission to form collaborations with partners from across the public, private, and nonprofit sectors, and determines how to work together on projects, create educational systems, and trainings to support community needs and interest, 3) promoting community engagement (CE) research and teaching; scholarship and public information/education; experiential learning and training opportunities for undergraduate and graduate students interested in health policy, and 4) sustaining and developing key CE partnerships.

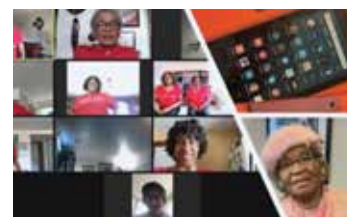
In 2021–22, CHECE bolstered its presence in the School of Public Affairs and Administration by successfully relocating its physical offices into the Center for Public Service; partnering with SPAA faculty to seek and implement funded research projects; teaching; and engaging doctoral and MPA students in impactful community-based research internships.

Campus/Intercampus Research & Funding Co-ventures	11
Exploratory Collaborations.....	13+
Grant Funds	293,500
Undergraduate Students	69
Graduate Student Internships	3 (1 doctoral, 2 Masters)
Courses Taught	1

FUNDED RESEARCH:

Senior Connect Digital Divide (see page 16)

Advancing Health Literacy to Enhance Equitable Community Responses to COVID-19



Partnering with the New Jersey Department of Health, City of Newark and Institute for Health, Health Care Policy, and Aging Research RU-N School of Public Affairs and Administration won a competitive grant from Office of Minority Health (OMH) at the U.S. Department of Health and Human Services. The grant seeks to demonstrate the effectiveness of local government implementation

of evidence-based health literacy strategies that are culturally appropriate to enhance COVID-19 testing, contact tracing and/or other mitigation measures (e.g., public health prevention practices and vaccination) in racial and ethnic minority populations and other socially vulnerable populations, including racial and ethnic minority rural communities. Dr. Hill serves on the project evaluation team.

New Jersey HEROES TOO

Early in the pandemic, New Jersey ranked second in the rate of COVID-19 deaths per capita. These deaths occurred disproportionately in Black and Latinx communities in Essex, Middlesex, Passaic, and Union counties, where testing rates were also found to be significantly lower.

New Jersey Healthcare Essential WoRker Outreach and Education Study -Testing Overlooked Occupations (NJ HEROES TOO), a \$5 million grant funded by the National Institutes of Health Rapid Acceleration of Diagnostics (RADx) initiative, RADx Underserved Populations (RADx-UP), was a major two-year staff engagement for OUCP/CHECE designed to identify community-based outreach strategies that could improve access to COVID-19 testing in underserved communities.

Partnering with lead grantee, the New Jersey Alliance for Clinical and Translational Science (NJ ACTS) at Rutgers University, Diane Hill, PhD and Maria Pellerano, MA, MBA, MPH convened the Community-Based Design Team, an integral part of the research design, which also included a Scientific Advisory and Healthcare Organization Design Team. OUCP's roles included: engaging community-based partners in the four counties; convening routine meetings of the partners for data gathering, bi-directional information sharing,

and co-design; developing a magazine (inaugural issue of NJ ACTS for Us! CONNECT) and other media and promotional materials; and celebration planning. OUCP/CHECE staff actively contributed to research design, project team meetings, protocol testing, salons and other information and data gathering efforts, and engaged one on one with community partners to provide coaching and support for project implementation.



NJ Department of Health Commissioner Judith Persichelli addresses the NJ HEROES TOO partners, investigators, and staff at a celebration event on May 24, 2022.



To learn more about New Jersey HEROES TOO visit:

New Jersey ACTS 4 US! CONNECT Magazine, Fall 2021. Focus: New Jersey HEROES TOO A University/Community Partnership Serving Essex, Middlesex, Passaic, and Union Counties. <https://njacts.rbhs.rutgers.edu/connect-magazine>

-OR-

*The NJ HEROES TOO website at:
<https://rwjms.rutgers.edu/nj-heroes-too/home>*

NJ HEROES TOO Community and Health Care Partners



Rutgers Partners: Rutgers Institute for Translational Medicine and Science; New Jersey Alliance for Clinical and Translational Science; Center Advancing Research and Evaluation for Patient-Centered Care at Rutgers Robert Wood Johnson Medical School; Environmental and Occupational Health Sciences Institute and Rutgers School of Public Health; Rutgers Center for Advanced Biotechnology & Medicine; OUCP/CHECE @ Rutgers University–Newark; Rutgers School of Public Affairs and Administration; Rutgers Robert Wood Johnson Medical School.

Community Partners: Parker Health Group; Robert Wood Johnson University Hospital; University Hospital Newark; Visiting Nurse Association Health Group; ASPIRA Association; Central Jersey Family Health Consortium, Inc.; East Orange Senior Volunteer Corporation; Health Coalition of Passaic County; Jazz for Prostate Cancer Awareness™; Mobile Family Success Center; New Brunswick Area Branch NAACP; New Brunswick Tomorrow; Communities in Cooperation, Inc.; New Hope NOW Community Development Corporation; Partnership for Maternal and Child Health of Northern New Jersey; Programs for Parents; Puerto Rican Action Board; Sister2Sister; The Bridge; Township of Hillside Senior Services and Recreation Center; United Way of Greater Union County; and Urban League of Union County.

Health Care Partners: Parker Health Group; Parker at Monroe; RWJBarnabas Health; University Hospital; Visiting Nurse Association Health GRP.

Credits Note: Photos: NJ HEROES TOO —A Program of the New Jersey Alliance for Clinical and Translational Science. Tamara Fleming, photographer.

The New Jersey Alliance for Clinical and Translational Science Community Engagement Core is supported by the NJ ACTS CTSA grant UL1TR003017. NJ HEROES TOO was made possible through funding from the NIH Rapid Acceleration of Diagnostics Underserved Populations (RADx-UP) Initiative.

JOSEPH C. CORNWALL CENTER FOR METROPOLITAN STUDIES

OUCP continued a robust multi-year partnership with the Cornwall Center in 2021-22 to support positive educational outcomes at Thirteenth Avenue/Dr. Martin Luther King School in Newark's West Ward. OUCP/CHECE advocates for funding and resources and to expand partnerships at the state and local level that support two programs at the school—the NewArk Freedom school which it launched in 2014, and the Promise Parent Academy, an outgrowth of OUCP's 2012 Promise Neighborhood Planning Grant, funded by the US Department of Education.



Promise Parent Leadership Academy

The premise of the Promise Parent Leadership Academy is that if parents in low-income neighborhoods receive the right training and support, some of them can make significant contributions to the well-being of their schools and communities. PPLA trains parents to take on strategic paraprofessional roles in elementary schools.”

OUCP supported PPLA by administering leadership workshops, negotiating placements for participants, and spearheading an opportunity for participants to earn an early childhood certification through an agreement with Programs for Parents, the City of Newark Office of Workforce Development, and the Newark Public Schools.



NewArk Freedom School



Founded in 2014, the NewArk Freedom School (NAF) began as a partnership between the Children's Defense Fund (CDF) Freedom Schools, Rutgers Graduate School

Newark, the Office of University-Community Partnerships, the Newark Fairmount Promise Neighborhood and Newark Public Schools. Sited at Martin Luther King, Jr./13th Avenue School, this unique university-community partnership model embedded RU-N students, RU Ready for Work summer interns, City of Newark Summer Interns (some of whom were graduates of the school) along with Newark Public School teachers and personnel, local public officials, business, and other community leaders to execute the CDF program tailored to the needs of Newark Public School students in grades 3-5.

NAF now continues under the auspices of the Cornwall Center with support from OUCP, 21st Century Community Learning Centers, and The Newark Board of Education Out of School Time program.

RUTGERS GLOBAL HEALTH INSTITUTE

Addressing gaps in healthcare equity and service use exacerbated by the COVID-19 pandemic OUCP/CHECE collaborated with the Rutgers Global Health Institute (RGHI) and local community partners to deliver much needed testing, vaccines, and other health related service opportunities to residents of Newark's West Ward. This collaboration is in keeping with a longstanding commitment from Rutgers University-Newark to advance anchor work in the community. Other examples of OUCP/CHECE's anchor work in the West Ward are outlined under the section *Anchor Work in Newark West Ward*, that begins on page 18.

PWI/Rutgers Global Health Institute Equitable Recovery for New Jersey's Small Businesses

In spring 2020, OUCP launched a partnership between Partnership West, Inc. (PWI), the Rutgers Global Health Initiative, RU-N's School of Public Affairs and Administration (SPAA), SPAA/OUCP's Center for Health Equity and Community Engagement (CHECE), and other entities with a vested interest in bringing about targeted neighborhood revitalization. Through this compound partnership, the group launched a multifaceted neighborhood development initiative that aims to redress multiple forms of systemic barriers to

access to quality care and services that hinder the community's growth. In 2021 the partnership conducted vaccination clinics in the West Ward in partnership with area small businesses.

For more information on this project visit:
<https://globalhealth.rutgers.edu/news/community-needs-shape-equitable-recovery-programs-covid-19-vaccine-clinics-in-newark/>





NJ HEROES TOO Team and Partners at Celebration Event, May 2022



Global Health Connection NJ Health Equity Response to COVID-19

OUCP/CHECE partnered with RGHI and local faith- and community-based organizations to host vaccine and testing clinics with their constituents, provide COVID-19 and related health education, and to co-plan a Community Health Fair that was executed in July 2022. These partnerships were an extension of OUCP/CHECE's efforts to support anchor work in the community, and especially in Newark's West Ward.



OUCP/CHECE's Beaumont, Gaynor, and volunteers support Community Health Fair.

PARTNERSHIPS

COMMUNITY COLLABORATIONS



ADVOCATES FOR HEALTHY LIVING INITIATIVE

The Advocates for Healthy Living Initiative (AHLI) provides our elders with tools and information to live healthier lives. Through base building and collaborations with community and faith-based organizations, we serve as partners in promoting health equity in our community. Throughout the COVID-19 pandemic AHLI continued to engage with community partners to address the needs of seniors in Greater Newark. 2021–22 AHLI Initiatives.

Senior Connect Digital Divide

In response to the COVID-19 pandemic, OUCP and the Advocates for Healthy Living Initiative (AHLI), surveyed older adults about their experiences and needs related to digital communications and devised the Senior Connect Digital Divide initiative. Securing funding and support from community partners OUCP/AHLI organized students and peer volunteers to provide one on one, group, and individual training designed to help seniors become proficient in using Fire 7 tablets. OUCP and partners also devised programs to encourage use of the technology, and train-the-trainer sessions for peer leaders interested in supporting the initiative.



Senior Connect Digital Divide Partners

RU-N's Office of the Chancellor, School of Public Affairs and Administration (SPAA), and Office of Information and Technology-Newark Computing Services (OIT); Rotary Clubs of Newark, Roselle-Roselle Park (Hillside), and East Orange; and Amazon.com, Inc.

Training Sites

Masjid Muhammad-Newark, Grace West Manor Senior Housing (Newark), Hillside Senior Citizens Center, Roselle Park Senior Services Casano Community Center, East Orange Senior Center, Anthony Amalfe Community Center (Newark)

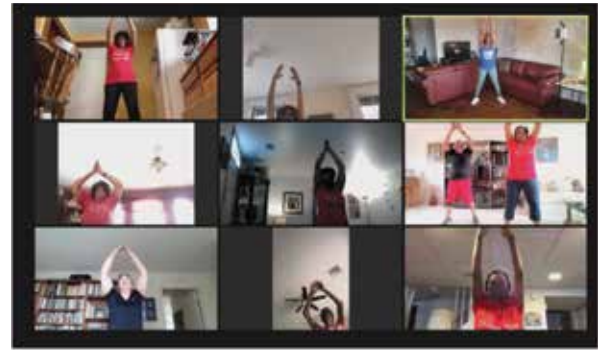
AHLI for Life Colorectal and Lung Cancer Screening Campaign

A partnership with ScreenNJ/Cancer Institute of New Jersey, AHLI for Life promotes principles of healthy living, cancer screening, and early detection. In addition, the campaign provided tips, tools, and resource connections to seniors to help them better address nutritional, physical, and emotional health.



Fitness Fridays

Senior Connect Digital Divide and AHLI for Life participants were invited to join the popular Fitness Friday virtual exercise program that was begun earlier in the COVID-19 pandemic. Participants logged more than 500 visits to the 27 Fitness Friday classes held virtually from November to June. The classes featured both Zumba and Sit & Fit chair exercises.



Rutgers Office of University Community Partnerships AHLI Community Advisory Board



Tania Cajuste
East Orange Division of
Senior Services



Margaret Cammarieri
Health Specialist



Mildred Crump
Newark Municipal Council,
City of Newark (Retired)



Mary Dawkins
Hillside Senior Services &
Cultural Affairs



Deacon Francis Dixon
The New Hope Baptist
Church



Mildred English
St. James AME Church



Crystal Gaynor
Certified Fitness Trainer



Francis Teabout
New Community
Corporation



Robin Lateef-Pharms
Masjid Muhammad-Newark



Louise Layton
Rutgers Aging Advisory
Council



Yolanda Mack
Greater Newark Healthcare
Coalition / Jehovah-Jireh
Praise & Worship Church
Center



Joan Reeves
East Orange Division
of Senior Services



Kelvin Roberson
NJ Urban Healthcare
Initiative Program / Messiah
Baptist Church



Almetta Sabb
Newark Office of Aging,
Department of Health and
Community Wellness



**Rev. Louise Scott-
Rountree**
Mayor's Office, City of



Donna Sparks
Bethany Baptist Church



Joslyn White
Paradise Baptist Church



Laverne S. Williams
Mental Health Association in
New Jersey



Geri Woods-Coles
Bethany Baptist Church



Lorraine Woolridge
Paradise Baptist Church

AHLI's Community Advisory Board (CAB) is comprised of community resident peer leaders, program administrators, local government officials, faith-based leaders, and other community stakeholders whose knowledge of Greater Newark, and deep relationships with residents, supports more meaningful interaction and positive outcomes. AHLI's CAB meets quarterly to guide and assist researchers and community partners review, create, and manage programming and projects that are respectful of residents' sensibilities and responsive to their needs.

ANCHOR WORK IN NEWARK WEST WARD

OUCP has been instrumental in bringing various university entities to support Dr. Martin Luther King, Jr./13th Avenue School's (MLK/13th Avenue School) annual goals of promoting academic excellence, increasing parental engagement, and boosting student attendance.

I Have a Dream Foundation

The I Have A Dream Foundation—New Jersey is a non-profit that provides individualized social, emotional, and academic support to young people (“Dreamers”) who reside in under-resourced communities. These support programs continue from kindergarten through college and include a guarantee of tuition assistance. As a board member of the I Have a Dream Foundation (IHAD), Assistant Chancellor Dr. Diane Hill spearheaded a connection with the program at MLK/13th Avenue School.



Trunk or Treat

The MLK/13th Avenue School's annual Trunk or Treat is one example of the school's community partners joining forces to support the school's efforts to boost student attendance. Students who arrive to school on

time at least 90 percent of the days during the month of October are invited to participate in the annual Trunk or Treat. Last year over 300 students participated in the event.



Winter Blessing Drive

OUCP/CHECE partnered with Rutgers University-Newark Police Department (RUPD) and other university partners for the First Annual Winter Blessings Drive. The drive benefitted public school students, senior citizens, and individuals living in shelters over the holiday season. Over 700 presents and nearly 50 winter coats (including 15 new children’s coats) were collected and distributed.



West Ward Community Coalition

A West Ward Community Conversation, “Public Safety in the West Ward: Discussion with the Newark Public Safety Collaborative” was held virtually on July 15, 2021. Dr. Alejandro Gimenez-Santana, Director; Lori Scott-Pickens, Senior Staff provided information about public safety initiatives and resources in the West Ward. The West Ward Community Coalition is a partnership between OUCP/CHECE and the offices of Senator Ronald Rice, Senator Teresa Ruiz, West Ward Councilman, Essex County Commissioners, and the Newark West Ward Clergy Alliance. Its purpose is to inform and engage stakeholders in partnerships and solution building.



Newark West Ward Clergy Alliance

OUCP/CHECE partnered with the Alliance to support its programs throughout 2021–22. One such event was the *From Tragedy to Pandemic: A Salute to our First Responders* on Saturday, September 11, 2021.



NEW JERSEY BLACK LEGISLATIVE CAUCUS FOUNDATION

The New Jersey Legislative Black Caucus Foundation (NJBLCF) is a non-profit corporation created for the purpose of promoting public policy by encouraging the interaction of the community with legislators and members of government at all levels. Dr. Diane Hill is a NJBLCF board member. OUCP/CHECE assisted the NJBLCF with two major efforts in 2021–22.

Internship Program

OUCP/CHECE facilitated the placement of four legislative internships and two coordinators for 2021–22. The interns represented Rutgers University-Newark and New Brunswick, Felician University, Montclair State University, and Rowan University. Both coordinators obtained degrees from Rutgers University (NB & NWK). The summer 2022 cohort, placed during the summer of 2022, is comprised of 4 Rutgers University scholars.

For more information on the NJBLCF Internship program visit:
<https://njlbcf.org/internship-members>



Virtual Series

OUCP/CHECE coordinated two programs: NJ Health Diversity Leadership Impact Virtual Series “Build Trust and Equity in Science” in April 2022, and NJ Health Diversity Leadership Impact Virtual Series Part 2 “Vaccine Hesitancy: History and Healing” in June 2022. The series is ongoing.



CARESPARC COMMUNITY FOOD DISTRIBUTION

Caresparc Community Connections is a non-profit organization committed to creating meaningful and lasting connections between vulnerable populations and community resource providers in ways that leave community members empowered and enabled to cultivate a culture of health, wellness, and sustainability that lasts a lifetime.

OUCP/CHECE partnered with Caresparc for food distribution to families during the COVID-19 pandemic. The program provided bi-weekly distribution of fresh fruits and vegetables (provided by Table to Table), shelf-stable goods, and protective equipment and supplies provided by the Newark Department of Health & Community Wellness. The program ran from April 2020 to June 2021. RU-N Police Department and United Vailsburg Service Organization (UVSO) facilitated food distribution to needy residents, including senior citizens and families of RU Ready for Work participants. Table to Table provided fresh produce and the Newark Department of Health & Community Wellness provided volunteers with protective equipment and supplies. Other partners for this effort included: Greater Newark



Conservancy; Office of Vice President of the Municipal Council; Councilman -At-Large Luis A. Quintana; Office of Councilwoman LaMonica R. McIver; New Jersey Medical School COVID Team; NewArk Outrageous Outreach; Urban Agriculture Cooperative; Jersey Cares; and The UPS Store.



OUCP/CHECE YOUTH FOCUSED PROGRAMS

Supporting positive development and outcomes in youth have been a focus for OUCP and later CHECE for more than a decade. Two examples of these ongoing commitments are the RU Ready for Work program and Jumpstart, a national affiliate network.

Jumpstart

Jumpstart is a national early education organization that recruits and trains college students, community members, and adult volunteers to serve preschool children where the need is the highest. Jumpstart team members receive extensive professional development training in the fields of early education, family and community engagement, and leadership. Jumpstart collaborates with AmeriCorps through The Corporation for National and Community Service. The RUN Jumpstart Program housed at OUCP for over a decade, has serviced over 1000 students and provided over 300 RUN college student the opportunity to earn the Segal Education Scholarship Award, valued at \$1,311. Scholars may apply the funds to their term bill or student loans and have seven years to utilize their education award. Throughout the pandemic, RUN's Jumpstart program was one of few Jumpstart programs that continued operations, providing virtual and



prerecorded lessons and delivering accompanying materials (i.e., coloring pages, crayons, and books) for families to use during the sessions. However, The Jumpstart program at Rutgers University-Newark sunset in 2021 due to National Jumpstart's shortfalls in staffing and funding.

RU Ready for Work

OUCP concluded a 14-year partnership with the the City of Newark's Newark Works due to Department of Labor/Workforce Development shifts in priorities that diminished the amount of funding needed to successfully execute the program. Over this time RU Ready for Work engaged more than 300 students, and boasted a graduation rate of 99%, of which 92% went on to post-secondary education, and 6% entered the workforce or military upon completion. RU Ready for Work completed its final cohort in summer 2021. Since the final cohort's program completion, RU Ready for Work continued communication with the students, as required by the city for one-year post program completion. We are proud to report that all 23 participants have successfully enrolled and completed their first year of college. The two participants who entered the workforce have also maintained positions throughout the year. Additionally, during the past year, there were three alumni from various years

who remained in contact and also gave back to the program by interning and assisting with the program's benchmark reporting requirements as well as alumni outreach. Intended to be a replicable youth work/career readiness model, a comprehensive compendium of curricular, developmental and evaluation materials were designed that are suitable for training youth development professionals.



CO-SPONSORED EVENTS

Rutgers African-American Alumni Alliance (RAAA), Inc.
2021 HALL OF FAME INDUCTION
 5 P.M., Saturday, October 2nd - Hyatt Regency, New Brunswick, NJ

CLASS OF 2020 SPECIAL HALL OF FAME INDUCTION
 5 P.M., Saturday, October 2nd - Hyatt Regency, New Brunswick, NJ

Early Bird Tickets: \$135 (August 1 - 31)
 \$150.00 from September 1 (2021 to October 1st)
 \$180 for September 2nd - 30th

WIM-N PROUDLY PRESENTS
WOMAN'S FILM FESTIVAL
 22 YEAR RETROSPECTIVE FILM FEST

29 JULY - AUG. 1

IN PERSON
 JULY 29 - CRANFORD THEATER
 JULY 30 - AKWAABA GALLERY
 WWW.WIM-N.COM/INPERSON

VIRTUAL
 JULY 29 - AUGUST 1
 WWW.WIM-N.COM/VIRTUAL

REGISTRATION OPEN TO THE PUBLIC | REGISTRATION FEE \$25

WWW.WIM-N.COM / 2021SCREENINGS
 WOMAN IN MEDIA - NEWARK
 INFO@WIM-N.COM

02/28/2022 CELEBRATE BLACK HISTORY

Join the New Jersey Devils and Jazz For Prostate Cancer Awareness!

For a Black History Month Celebration: Game at Prudential Center, featuring the jazz music of NJPAC's Mark Gross!

For tickets: <https://t.me/jazz4pca>

So, let's get jazz with the New Jersey Devils on Black History Night!

MON | FEB 28

Boys to Leaders FOUNDATION

ANNUAL YOUTH LEADERSHIP CONFERENCE

Keynote Speaker **Jacquim Raines, Jr.**
 President, Mexican American School Board Association

SATURDAY, OCTOBER 30, 2021
 9:00AM - 12PM (VIRTUAL)

You MUST Register

SCAN ME

Workshops include

The Life, Legacy of Lois of Newark's Cultural Icons
 a Documentary film

RUTGERS

Saturday, December 11th, 2021
 11am & 1:30pm

RSVP: <https://events.csr.rutgers.edu>

Express Newark
 14 Murray Street - 2nd Floor
 Newark, NJ 07102

OUCP/CHECE CO-SPONSORED EVENTS 2021-22

In keeping with its community engagement mission, OUCP/CHECE co-sponsors a variety of events that contribute to well-being in the Greater Newark Community. Events in 2021-22 include:

- **Newark Women in Media Women's Film Festival:**
12 Year Retrospective Film Fest. 2021
July-August 2021
- **Rutgers African American Alumni Alliance (RAAA) 2021**
Hall of Fame Induction
October 2021
- **Boys to Leaders Foundation**
Annual Youth Leadership Conference
October 2021
- **Newark Arts Festival**
Woman in Media Newark, and Celeste Bateman & Associates, LLC
Gone Too Soon Community
Film Screenings at Express Newark
December 2021
- **Jazz4Prostate Cancer Awareness (Jazz4PCA)**
Black History Month Celebration
& New Jersey Devils Hockey Game
February 2022
- **International Collaboration**
Newark community partners and Governor Douye Diri and a delegation from Bayelsa State, Nigeria
University Hospital Tour, Luncheon
Reception, and Discussion
June 2022



**Governor
Douye Diri**



SCHOLARSHIP & ACHIEVEMENTS



SCAST

A scared Finnish woman called the police at night. At first, the police were called to her house. They discovered that a man had been identified for the police. Because it is the way to survive in the woods, to cut through all the messes in the woods, she wants to stop the woman's alcohol supply.

27 What is the most suitable title for this article?

- A) A Scared Finnish Woman
- B) Woman Scared by the Police at Night
- C) Children Making Trouble at Night
- D) Strange Alcohol Supply

Refereed Journal Articles

Jimenez ME, Rivera-Núñez Z, Crabtree BF, HILL D, Pellerano MB, DEVANCE D, Macenat M, Lima D, Martinez Alcaraz E, Ferrante JM, Barrett ES, Blaser MJ, Panettieri RA Jr, Hudson SV. Black and Latinx Community Perspectives on COVID-19 Mitigation Behaviors, Testing, and Vaccines. *JAMA Netw Open*. 2021 Jul 1;4(7):e2117074. Doi: 10.1001/jamanetworkopen.2021.17074. PMID: 34264327; PMCID: PMC8283554.

Jimenez ME, Rivera- Núñez Z, Crabtree BF, HILL D, Pellerano MB, DEVANCE D, Macenat M, Lima D, Martinez Alcaraz E, Barrett ES, Blaser MJ, Panettieri RAJ r, Hudson SV. I Don't Want to be a Part of Anybody's Experiment: Understanding Black and Latinx Community Perspectives on COVID-19 Experiences, Precautions, and Vaccines [poster]. In: Proceedings of the 2021 Virtual Academy Health Research Meeting. Session: Addressing Consumer and Patients' Preferences and Needs, June 14-17; Poster nr 38.

Rivera-Núñez Z, Jimenez ME, Crabtree BF, HILL D, Pellerano MB, DEVANCE D, Macenat M, Lima D, Gordon M, Sullivan B, Rosati RJ, Ferrante JM, Barrett ES, Blaser MJ, Panettieri RA Jr, Hudson SV. Experiences of Black and Latinx health care workers in support roles during the COVID-19 pandemic: A qualitative study. *PLoS One*. 2022 Jan 18;17(1):e0262606. Doi: 10.1371/journal.pone.0262606. PMID: 35041702; PMCID: PMC8765643.

Pellerano MB, HILL D, Jimenez ME, Gordon M, Macenat M, Ferrante JM, Rivera-Núñez Z, DEVANCE D, Lima D, Sullivan B, Crabtree BF, Georgopoulos P, Barrett ES, Reed DJ, Pernell CT, Dawkins MR, Lynn B, Dixon F, Castañeda M, Garcia H, Blaser MJ, Panettieri, Jr RA, Hudson SV (2022) Connect: Cultivating academic/community partnerships to address our communities' complex needs during public health crises. *Progress in Community Health Partnerships*. 15 August 2022.

Barrett ES, Andrews TR, Roy J, Greenberg P, Ferrante JM, Horton DB, Gordon M, Rivera-Núñez Z, Pellerano MB, Tallia AF, Budolfson M, Georgopoulos P, Reed D, Lynn B, Rosati R, Castañeda M, Dixon F, Pernell C, HILL D, Jimenez ME, Blaser MJ, Panettieri R Jr, Hudson SV. Community- Versus Health Care Organization-Based Approaches to Expanding At-Home COVID-19 Testing in Black and Latino Communities, New Jersey, 2021. *Am J Public Health*. 2022 Oct 20:e1-e5. doi: 10.2105/AJPH.2022.306989. Epub ahead of print. PMID: 36265092.

Bagchi AD, Corasmin E, Menifield CE, Weber PF, Baveja A, Damas K, HILL D, Peavy D, (2022) An Academic-Community Research Partnership to Enhance Structural Competency for Health Equity, *The Journal of Continuing Higher Education*, DOI: 10.1080/07377363.2022.2067729

Frances, J., Baveja, A, Ding, C, Bagchi, AD, Melamed, B, HILL, D. Navigating Future Shifts in Healthcare Service Delivery: Three Insights from Supply Chain Management. *Management and Business Review*. (Forthcoming).

Read All About It!

NJ ACTS 4 US! *Connect Magazine*. Fall 2021. <https://go.rutgers.edu/NJACTS4Us-CONNECT>

Community Needs Shape Equitable Recovery Program's COVID-19 Vaccine Clinics in Newark December 16, 2021. <https://globalhealth.rutgers.edu/news/community-needs-shape-equitable-recovery-programs-covid-19-vaccine-clinics-in-newark/>

Governor Murphy Establishes Wealth Disparity Task Force September 14, 2021 <https://nj.gov/governor/news/news/562021/approved/20210914a.shtml>

Senior Citizens and the Digital Divide

<https://oucp.newark.rutgers.edu/announcement/senior-citizens-and-the-digital-divide/>

Rutgers-Newark and Community Allies Help Mitigate Digital Divide Among Seniors

<https://thepositivecommunity.com/2021/05/20/rutgers-newark-and-community-allies-help-mitigate-digital-divide-among-seniors/>

Speaking and Presentations

Council of New Jersey Grantmakers. *Vaccine Preparedness and Messaging Through Community Engagement*. January 2021 (Diane Hill)

Seton Hall University Population Health Faculty Development Workshop. *Building Bridges to the Community Together: A Model for Advancing Community Engagement and Research*. September 17, 2021 (Diane Hill)

School of Public Affairs and Administration, RU-N. *Closing the Digital Divide in Newark*. A Newark Tech Week Virtual Event. December 10, 2021 (Diane Hill)

Rutgers School of Criminal Justice (Forum). *75 Years in the City of Newark: A Pathway Forward for Social Justice*. January 19, 2022 (Diane Hill)

United Nation's Commission on the Status of Women 66th Session (CSW66). *UN Women Conversation Circles: Anti-Racism*. March 2022 (Donita Devance)

Rutgers Leadership Academy Final Poster Presentation. *Community Capacity Building*. May 2022 (Yvette Beaumont)

New Jersey Alliance for Clinical Translational Science (NJ ACTS) and Rutgers University Partners: Rutgers Biomedical and Health Sciences, Rutgers–New Brunswick, Rutgers–Newark, and Rutgers-Camden. *Community Engaged Scholarship Symposium: Best Practices to Achieve Health Equity*. June 14, 2022 (Diane Hill)



Professional Development, Public Service, and Civic Engagement

OUCP/CHECE TEAM

DIANE HILL

- New Jersey Wealth Disparity Task Force, 2022
- New Jersey Kids Initiative Community Advisory Board-Communications & Marketing Working Group 2020-present
- [Rutgers University-wide] Community Engaged Scholarship Planning Committee (2022-present)
- Governor Murphy's Third Sector Advisory Council, State of New Jersey Appointment, 2021
- University Hospital Newark - Chairperson, Community Oversight Board (legislative appointment), 2019-present
- New Jersey Martin Luther King Jr. Commemorative Commission, Commissioner Appointment, 2019-present
- City of Newark Commission on the Status of Women, Commissioner Appointment, 2019-2021
- Rutgers University—Newark Women's History Month Committee (2018-present)
- Newark Board of Education Clarity 2020 Strategic Planning Co-Convener for Parents Roundtable, Appointment, 2019-2021
- Newark Rotary Club Member, 2019-present
- Program for Parents Board of Directors, 2019-present
- Boys to Leaders Foundation Board of Director, 2019-present
- Newark YMCA Board of Directors, 2019-present
- Zonta Club of Essex County, 2017-present
- Bloomfield, New Jersey Planning Board Member-Appointment, 2017-present
- University Hospital-Community Oversight Board-Legislative Appointment, 2014-present
- New Jersey Legislative Black Caucus Foundation, Vice Chair, 2011-present

- Occupational Therapy Advisory Council in the Department of Law and Public Safety, Division of Consumer Affairs (Public Member), Appointed by Governor, 2010-present
- New Jersey I Have A Dream Foundation, Board Member, 2009-present
- Women in Media-Newark (WIM-N), Board Member, 2009-present

YVETTE BEAUMONT

- Promotion to Associate Director OUCP/CHECE
- Completed Rutgers Leadership Academy
- Rutgers University—Newark Women's History Month Committee

DONITA DEVANCE

- Staff Service Recognition Reception—20 Years
- United Nation's Commission on the Status of Women 66th Session (CSW66) Parallel Event *Against All Odds: Pathways and Approaches to Crisis Mitigation for the Health and Safety of Women*

ROXANNE HALL

- Graduation—Rutgers School of Social Work, MSW, Magna Cum Laude

GRADUATE STUDENTS

ASSITAN DRAME

- Appointment: Rutgers Global Health Institute Student Council
- Women's History Month Honoree

EPIPHANY MUNZ

- Appointment: Rutgers Global Health Institute Student Council

OUCP/CHECE Partners 2021-22

- Amazon.com, Inc.
- American Heart Association
- American Lung Association
- ASPIRA
- Big Brothers Big Sisters of Essex, Hudson & Union Counties
- Caresparc Consulting Inc.
- City of Newark
- Clara Maas Medical Center
- Community Food Bank of New Jersey
- County of Essex New Jersey
- East Orange Senior Services
- Greater Newark Conservancy
- Greater Newark Healthcare Coalition
- Health Coalition of Passaic County
- Hillside Senior Services
- Jazz for Prostate Cancer Awareness
- Jumpstart
- Mental Health Association in New Jersey
- NAACP
- New Community Corporation
- New Hope Baptist Church
- New Jersey Alliance for Clinical and Translational Science (NJ ACTS)
- New Jersey Department of Health
- New Jersey Department of State, Center for Hispanic Policy, Research & Development
- New Jersey Legislative Black Caucus Foundation
- New Jersey Urban Healthcare Initiative Program
- Newark Communities That Care
- Newark Community Health Services
- Newark Emergency Services for Families
- Newark Housing Authority
- Newark Workforce Investment Board
- North Jersey Black Clergy
- Northern Maternal Child Health Partnership
- Positive Community Magazine
- Programs for Parents
- Rotary Club of Newark, NJ
- Rutgers African American Alumni Alliance
- Rutgers Cancer Institute of New Jersey
- Rutgers Global Health Institute
- Rutgers Institute for Health, Health Care Policy and Aging Research
- Rutgers New Jersey Medical School
- Rutgers School of Public Affairs and Administration
- Rutgers–Newark Gourmet Dining
- ScreenNJ/The Cancer Institute of NJ
- St. James Social Service Corporation
- The Bridge
- United Way of Greater Union County
- University Hospital
- Urban Healthcare Initiative Program
- Urban League of Essex County
- Urban League of Union County
- US Department of Health and Human Services, Office of Minority Health
- WBGO-Jazz 88.3 FM
- West Ward Community Coalition
- Woman in Media-Newark
- Youthbuild Newark
- Zonta Club of Essex County





The mission of the Office of University-Community Partnerships is to serve as the nexus that connects Rutgers University–Newark students, faculty and staff to expand, create and promote reciprocal and mutually beneficial partnerships that support and align with the university’s strategic engagement priorities.



The Center for Health Equity and Community Engagement (CHECE) builds upon proven effective community engagement strategies developed by Rutgers University–Newark’s Office of University-Community Partnerships (OUCP) and the scholarship and knowledge-based services that are the hallmarks of the School of Public Affairs and Administration (SPAA). The center’s mission is to support public, nonprofit, and private sector entities to effectively engage underrepresented urban constituencies in health research, scholarship, policy and decision-making, service delivery, community engagement, and assessment.